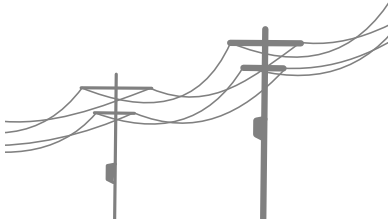
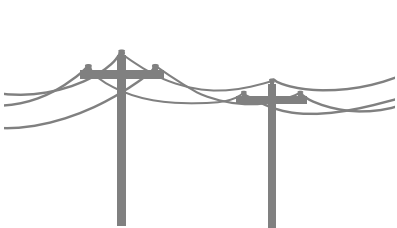


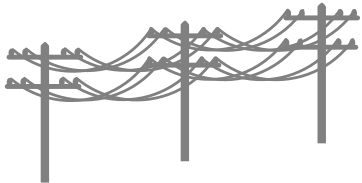
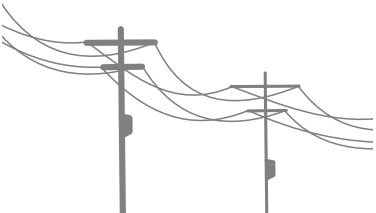


RETIRO DE CABLE EN DESUSO		
TRIMESTRE	TONELADAS RETIRADAS	METROS CORREGIDOS
1er.	9 Tn	17.868 m
TOTAL	9 Tn.	17.868 m





RETIRO DE CABLE EN DESUSO		
TRIMESTRE	TONELADAS RETIRADAS	METROS CORREGIDOS
1er.	9 Tn	17.868 m
2do.	2 Tn.	5.768 m
TOTAL	11 Tn.	23.636 m





RETIRO DE CABLE EN DESUSO		
TRIMESTRE	TONELADAS RETIRADAS	METROS CORREGIDOS
1er.	9 Tn	17.868 m
2do.	2 Tn.	5.768 m
3er.	8 Tn.	14.742 m
TOTAL	19 Tn.	38.378 m

